

FIGURE 19.1 ■ Hypophysis (panoramic view, sagittal section). Stain: hematoxylin and eosin. Low magnification.

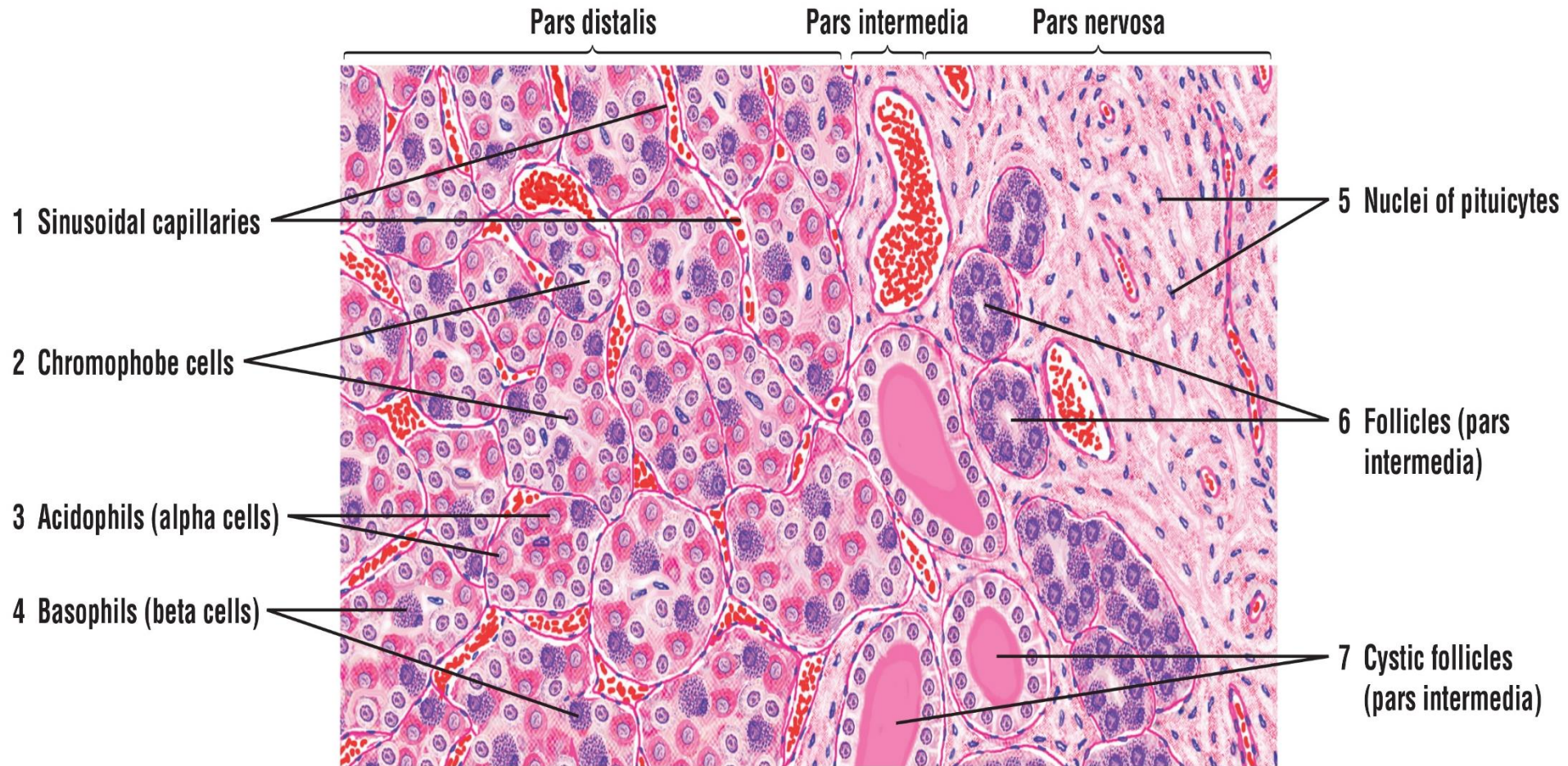


FIGURE 19.2 ■ Hypophysis: sections of pars distalis, pars intermedia, and pars nervosa. Stain: hematoxylin and eosin. Medium magnification.

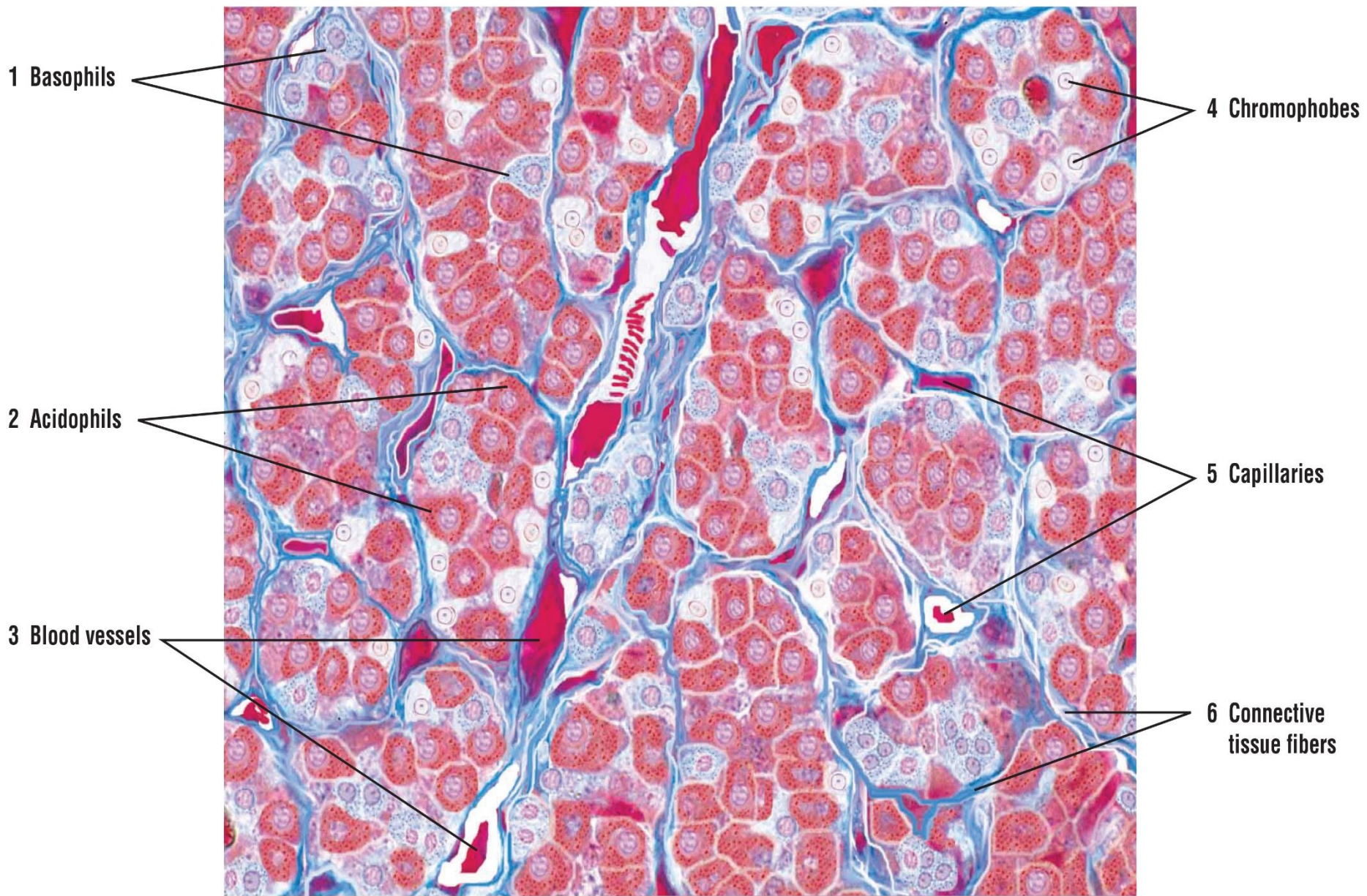


FIGURE 19.3 ■ Hypophysis: pars distalis (sectional view). Stain: Azan. High magnification.

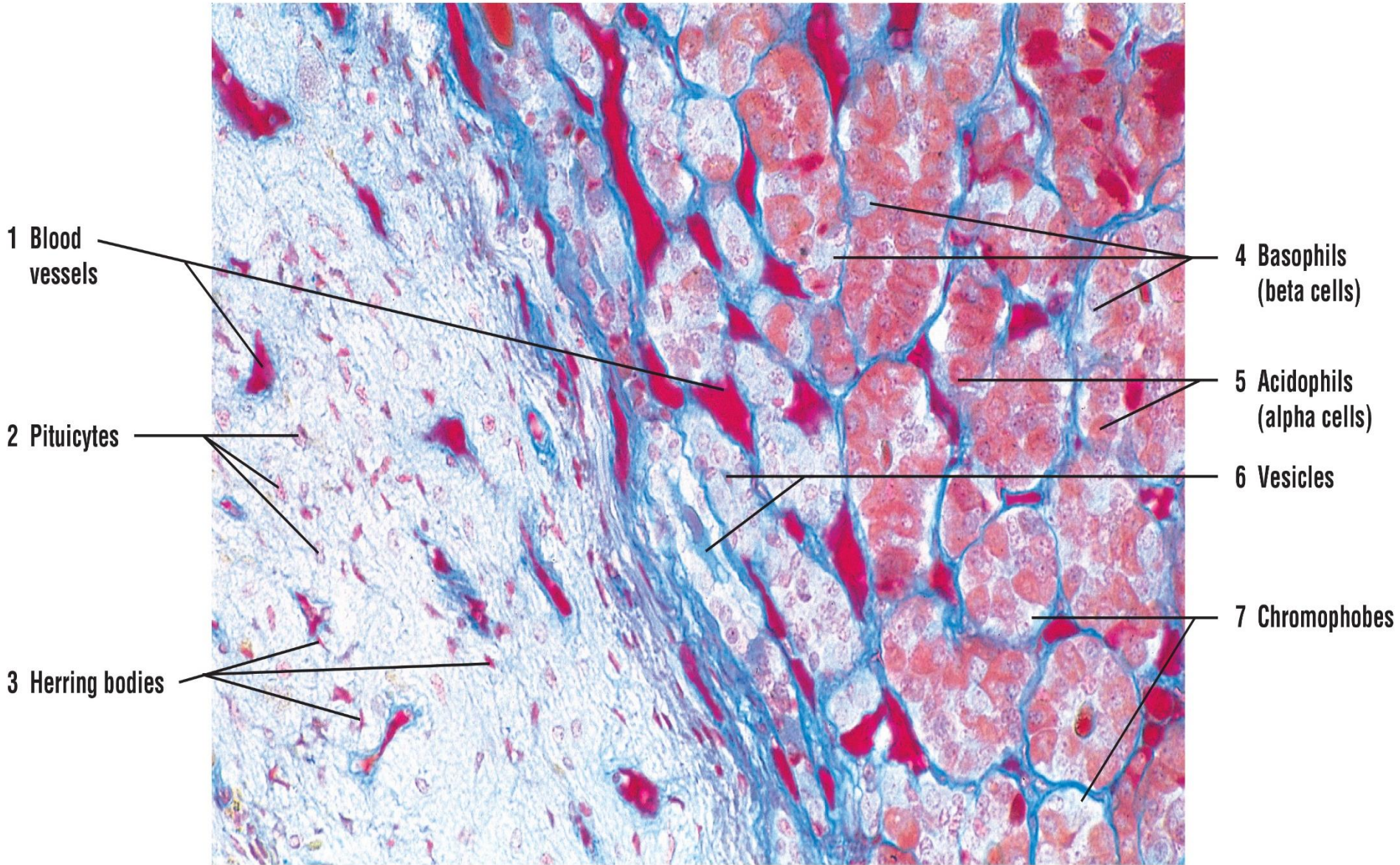


FIGURE 19.5 ■ Hypophysis: pars distalis, pars intermedia, and pars nervosa. Stain: Mallory-Azan and orange G. x80.

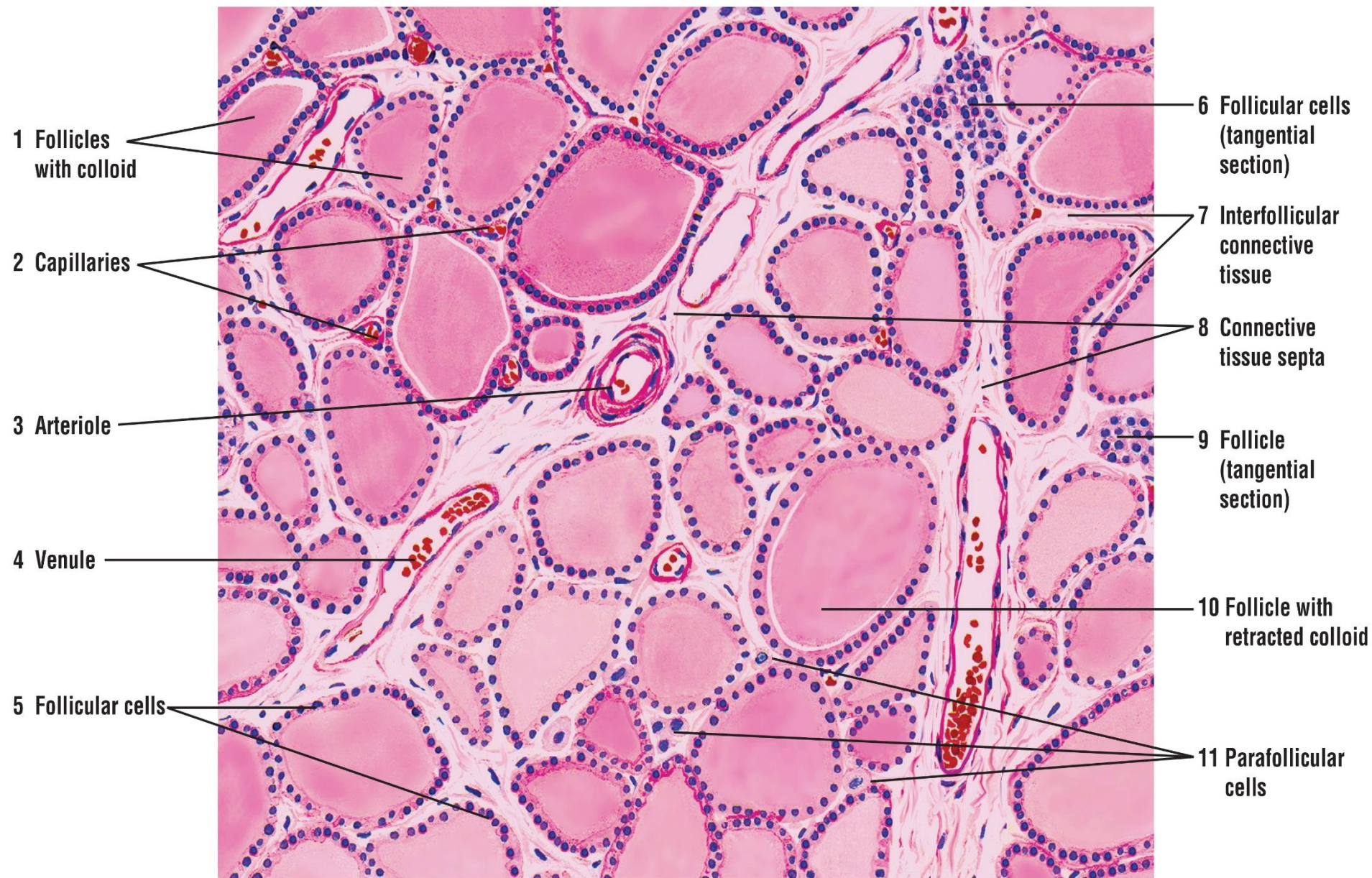


FIGURE 19.6 ■ Thyroid gland: canine (general view). Stain: hematoxylin and eosin. Low magnification.

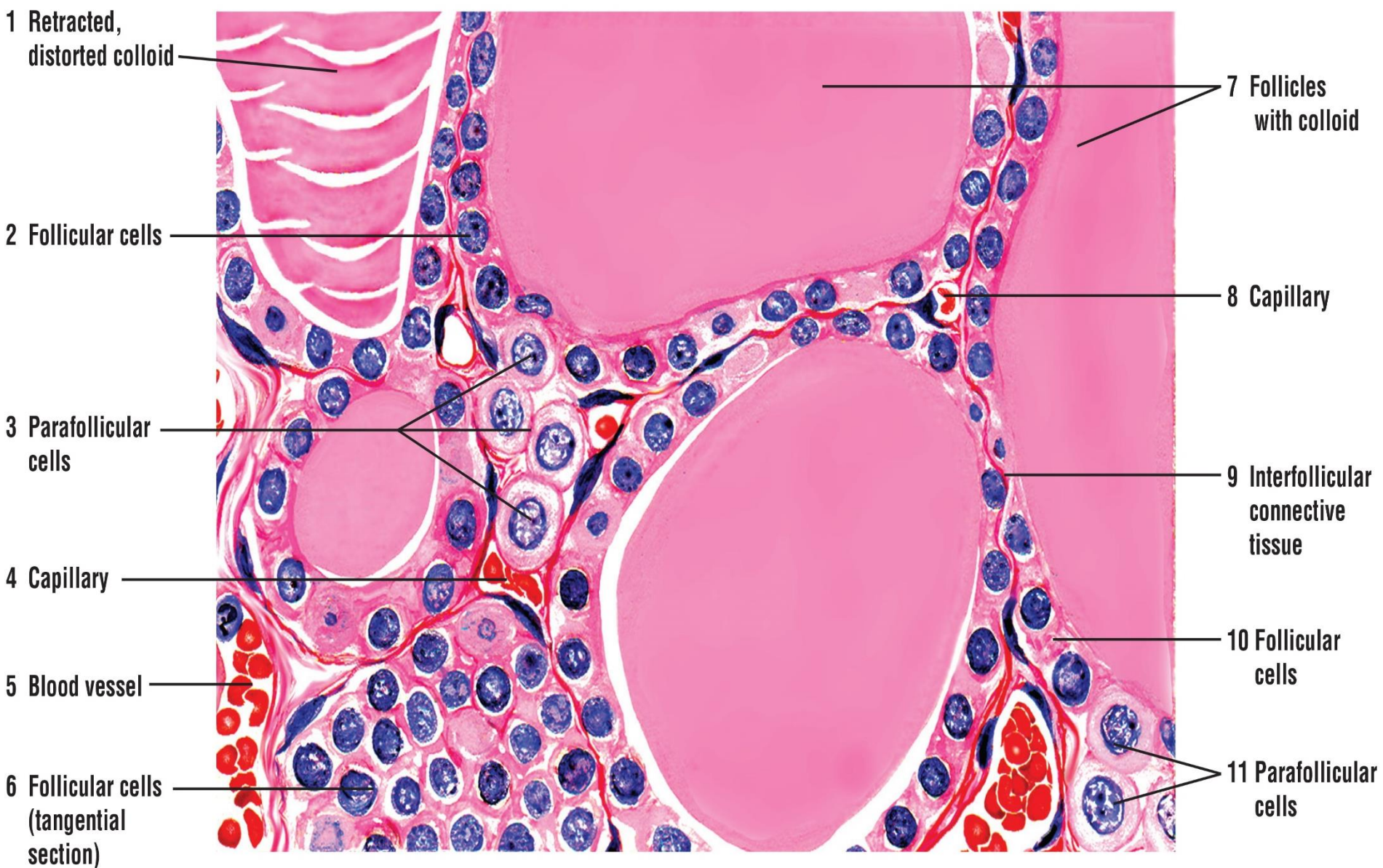


FIGURE 19.7 ■ Thyroid gland follicles: canine (sectional view). Stain: hematoxylin and eosin. High magnification.

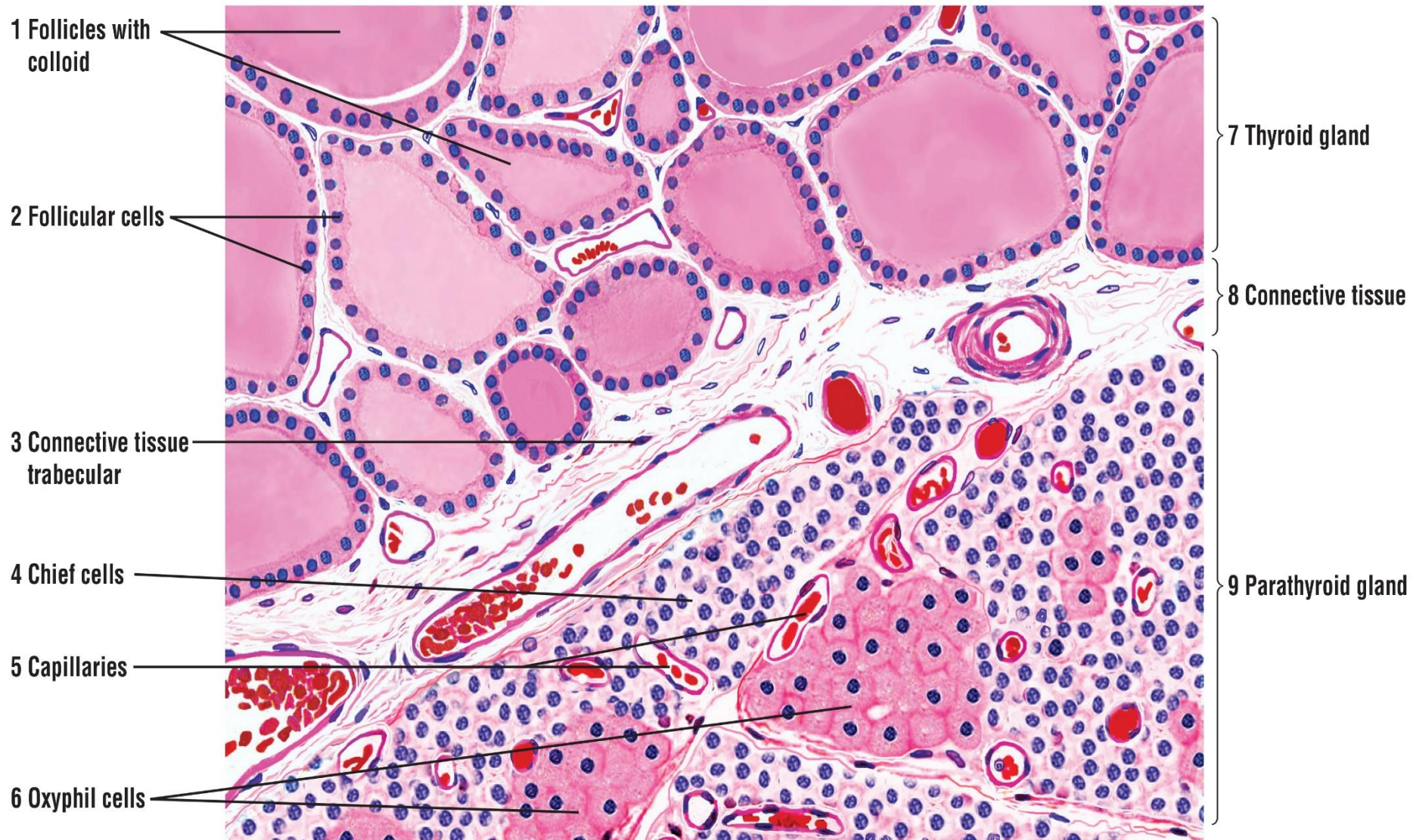


FIGURE 19.8 ■ Thyroid and parathyroid glands: canine (sectional view). Stain: hematoxylin and eosin. Low magnification.

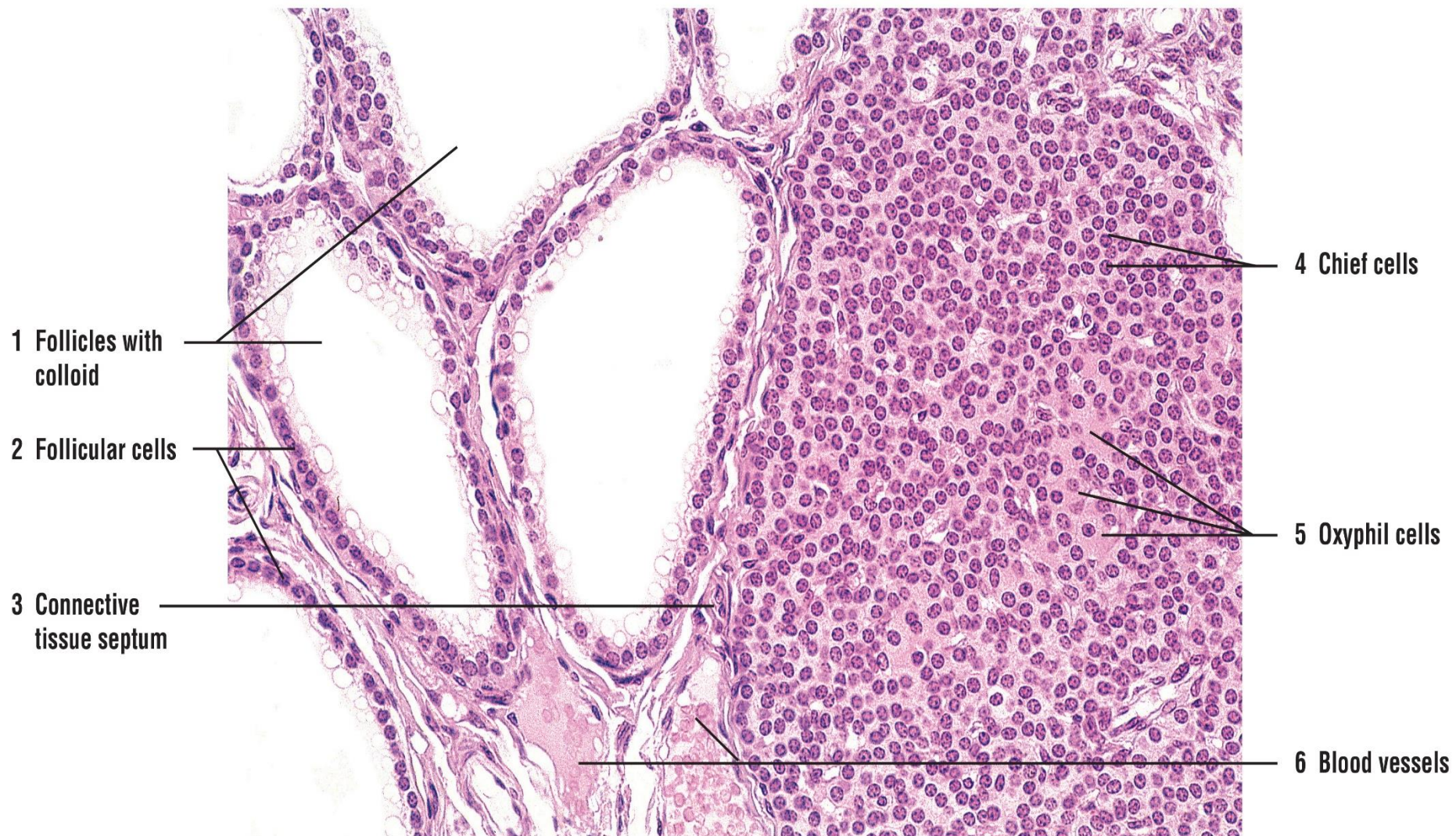


FIGURE 19.9 ■ Thyroid gland and parathyroid gland. Stain: hematoxylin and eosin. $\times 80$.

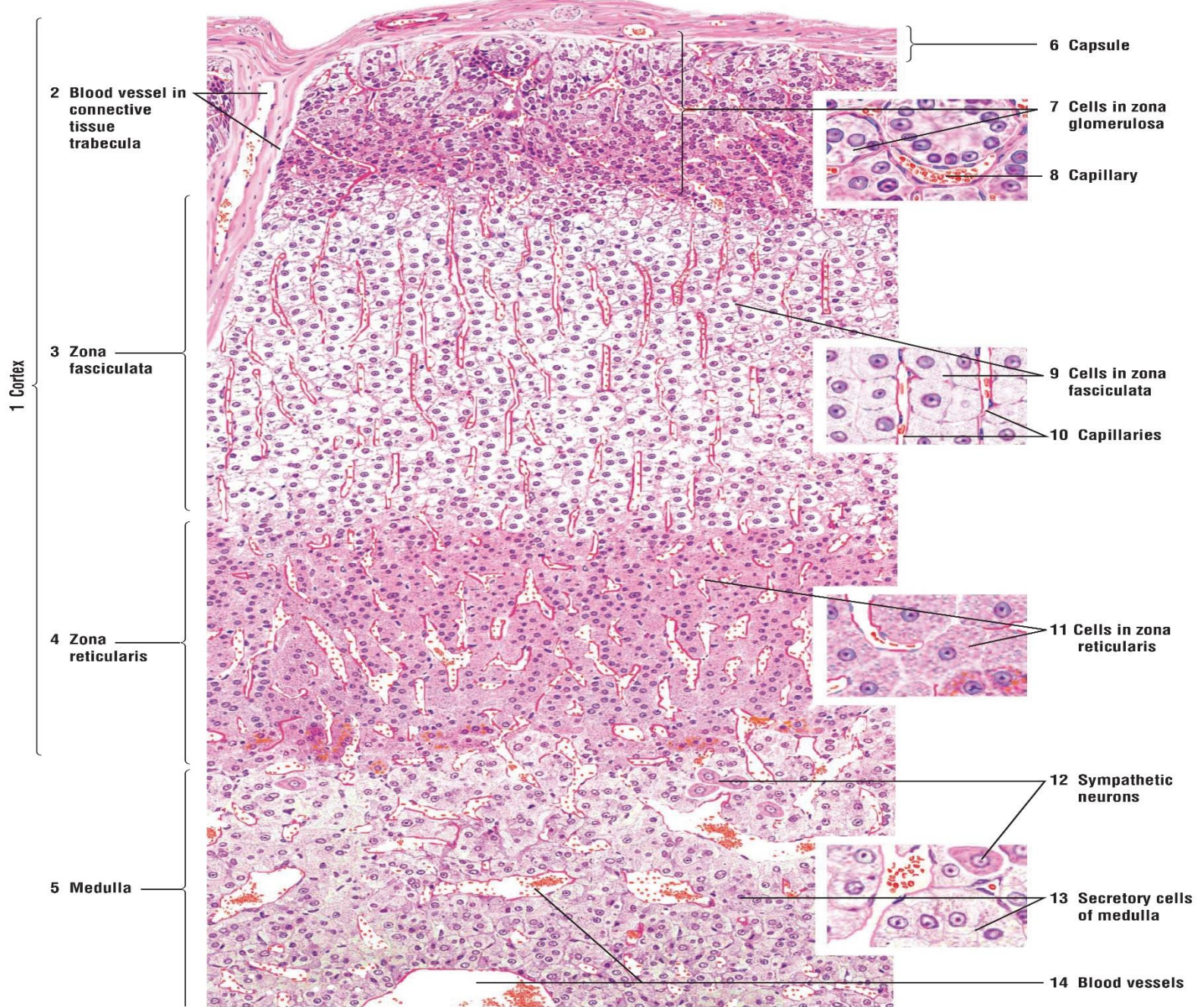


FIGURE 19.10 ■ Adrenal (suprarenal) gland. Stain: hematoxylin and eosin. Low magnification.

1 Capsule

2 Zona glomerulosa

3 Zona fasciculata

4 Zona reticularis

5 Medulla

6 Blood vessels

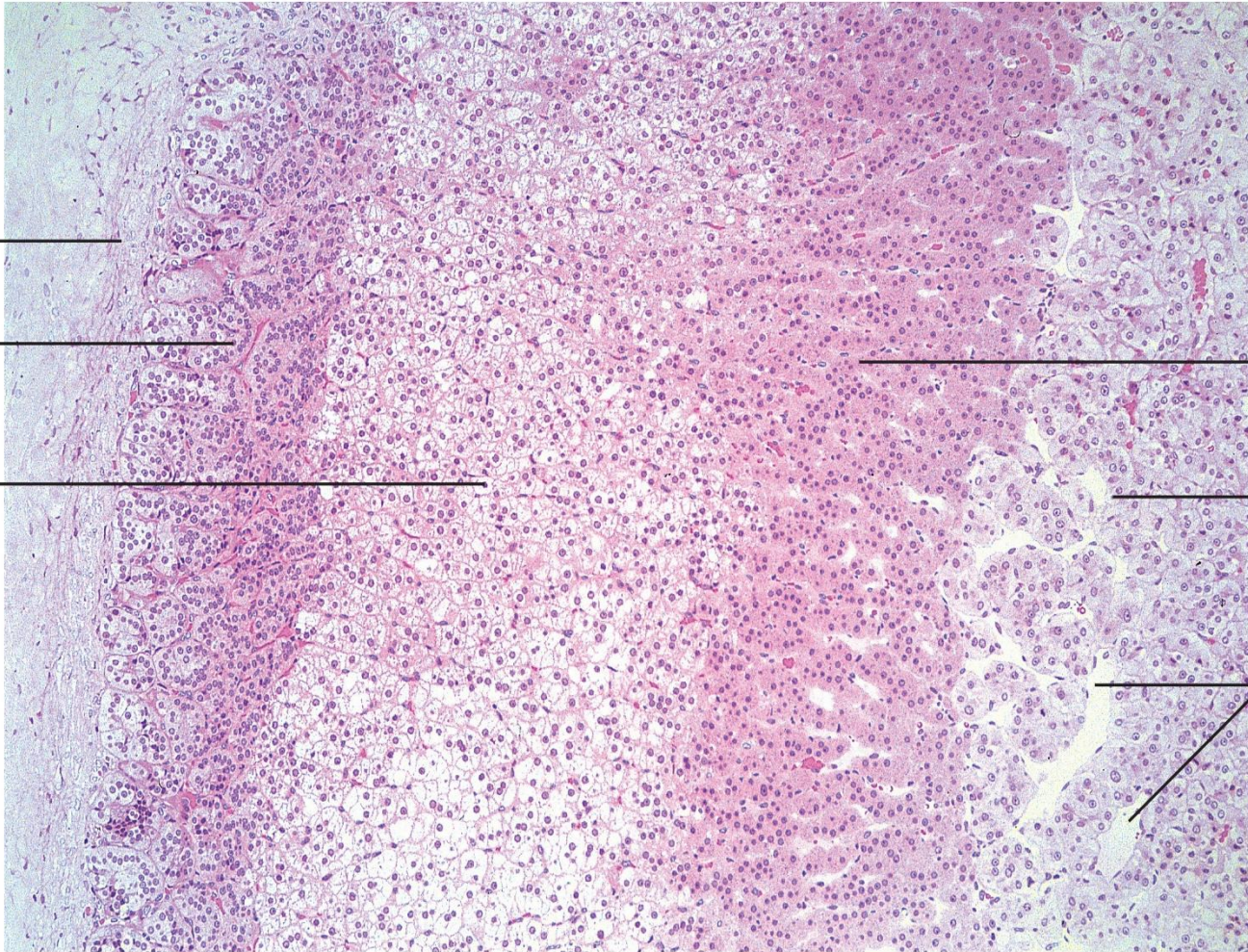


FIGURE 19.11 ■ Adrenal (suprarenal) gland: cortex and medulla. Stain: hematoxylin and eosin. ×25.