

Sexually transmitted diseases (STD) part 2

Dr. Sanaa abd Al-Hussein

Chancroid (soft chancre) :

- It is caused by the short gram – ve coccobacillus “ Haemophilus ducreyi “

Clinical features :-

- After I.P 3-5 days, painful papules appear at the site of contact that rapidly ruptures to form multiple painful ulcers that bleed easily and are soft on palpation.
- Unilateral or bilateral inguinal LAP develop above one week after the initial lesion. These are painful nodes and may suppurate.

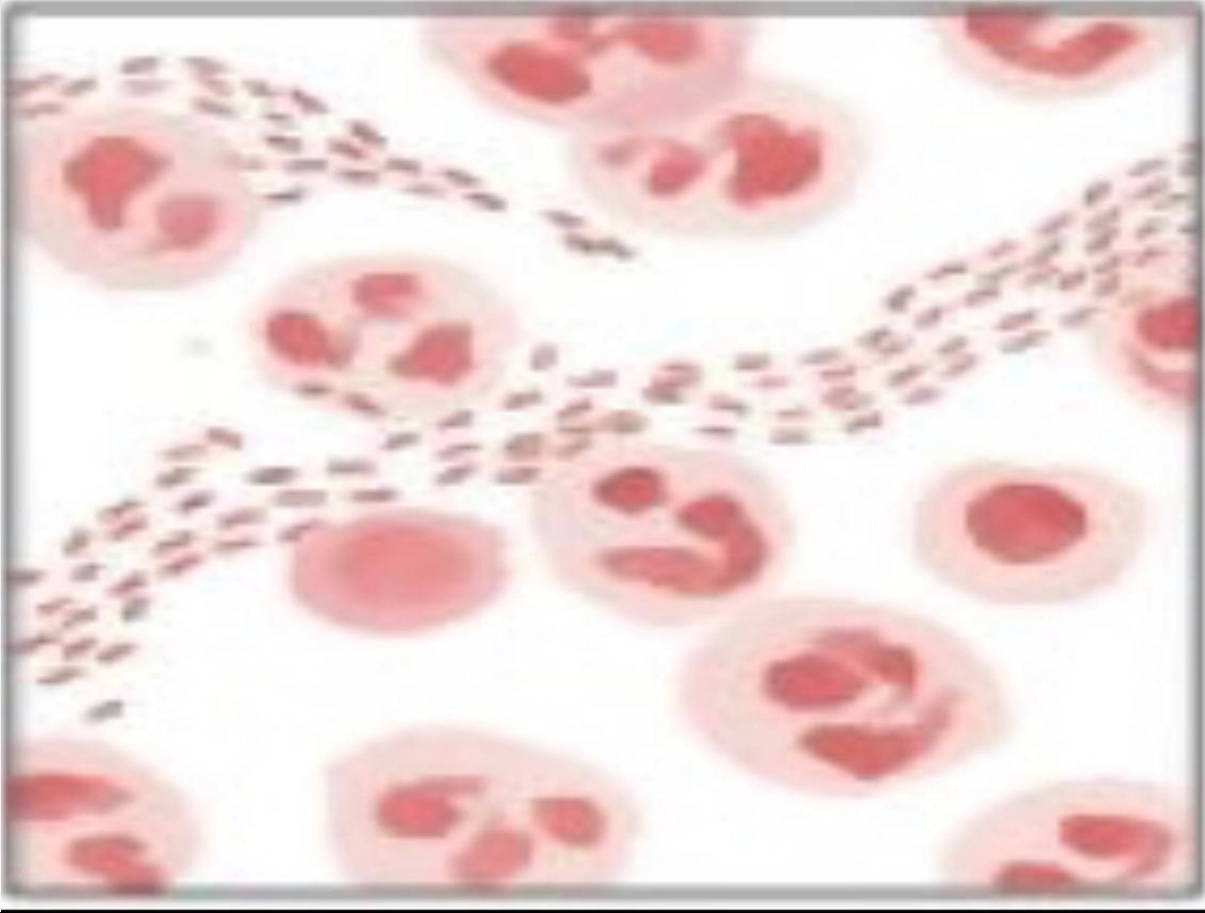
chancroid ulcer



Diagnosis :-

1. Clinical history and examination.
2. Gram-staining to observe the gram – ve coccobacilli that are arranged in parallel chains (called school of fish pattern).
3. Culture.
4. Serological test to exclude contaminant syphilis.

school of fish pattern



Treatment :-

1. Azithromycin 1gm orally, single dose.
2. Ceftriaxone 250mg I.M single dose.
3. Ciprofloxacin 500mg orally twice daily for 3 days.
4. Erythromycin 500mg orally 4 times /day for 7 days.

Gonorrhoea

- Common STD caused by the Gram – ve diplococci “ Neisseria Gonorrhoea “. It affects mainly the genitourinary system of both male & female together with rectum, mouth & pharynx.
- **Mode of infection** ----- Sexual contact with infected person or, Accidental from towels or, Newborn during passage in birth canal of infected mother.
- **I.P** ----- 2-5 days.

Gonorrhoea in Male :-

- Acute anterior urethritis : profuse, thick, creamy yellowish or yellowish-green discharge with little dysuria .
- O/E ---- red & edematous external meatus.
- The condition is neglected ----- acute posterior urethritis.

Gonorrhoea in female :-

- Majority are asymptomatic but may cause vaginal discharge in severe cases & burning micturition.

Extragenital gonorrhoea :

1. Proctitis.
2. Ophthalmia neonatorum.
3. Mouth & throat infection.
4. Arthritis – Dermatitis syndrome.

Diagnosis :-

1. Clinical Hx & Ex.
2. Gram's Stained Smear: Gonococci appear on gram – ve (red) intracellular bean or kidney-shaped diplococci.
3. Culture on :
 - Enriched media e.g.// chocolate agar.
 - Selective media which allows the growth of the gonococcus & inhibits the growth of other organisms e.g.// Thayer & Martin medium.

Treatment of gonorrhoea :-

- Uncomplicated ---- antibiotic for 5-7 days).
- Complicated ----- antibiotic but increase dose & for 2 wk.
- Antibiotic ----- ceftriaxone , cefixime.



Thank you!!!!!!