



Dipylidium caninum



Dipylidium caninum is a tapeworm that commonly infects dogs and cats. And occasionally affects humans, especially children. The first cases of D. caninum in humans were discovered in 1903 with several cases in Europe and one in the U.S



Common name: Dog or cat tapeworm; double-pored-dog tapeworm

Name of disease: Dipylidiasis-

Final Hosts: Dogs, Cats, Humans-

Reservoir: unknown-

I.M.H.: larva of dog fleas (*Ctenocephalide* species)-

.Infective stage: cysticercoid for F.H & egg for I.M.H

Incubation Period: approximately 20 days



Morphology

cm in length 10-70

:Scolex

conical-shaped and has four -
suckers. There is a rostellum
armed with several rings of small
.hooks

provided with 15-30 of hooks-



Segments(strobilia)

segments ,diagnostic (200

.feature(pumpkin-seed shape)

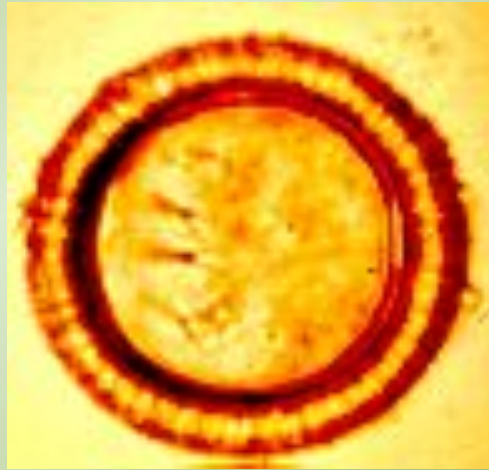
they contain two sets of male and female reproductive organs.

They therefore demonstrate two genital pores that lead to their name as the “double-pored

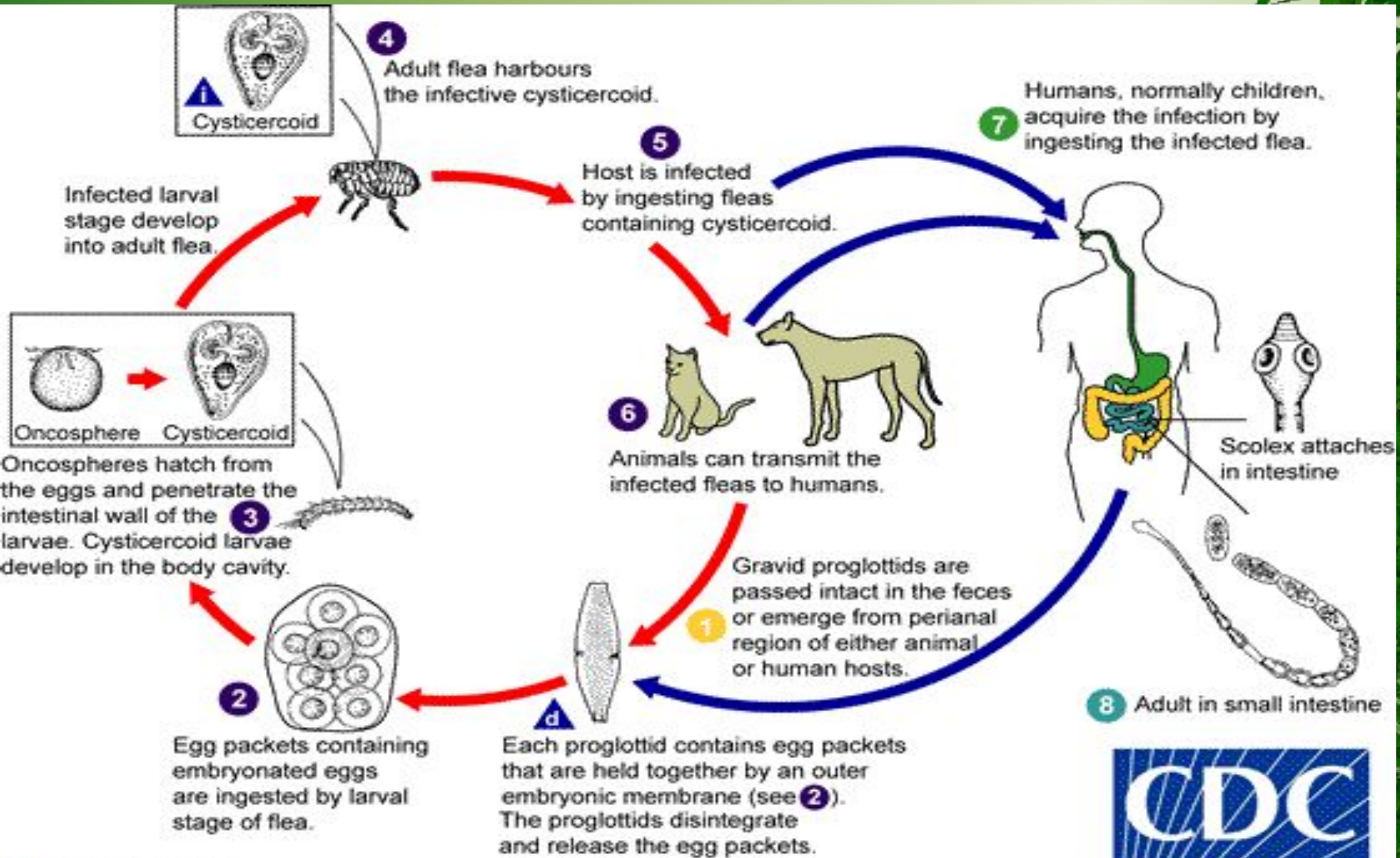


gravid segments :contain egg capsule,
The number of eggs can range from 5 to
30. egg similar to egg of taenia spp.
(hexacanth embryo, embryophore, outer
membrane). The larvae of *D. caninum*
are known as cysticercoids because the
scolex is enclosed in a fluid-filled cyst at
this stage.





Life Cycle



SAFER • HEALTHIER • PEOPLE™

<http://www.dpd.cdc.gov/dpdx>

Human Infection

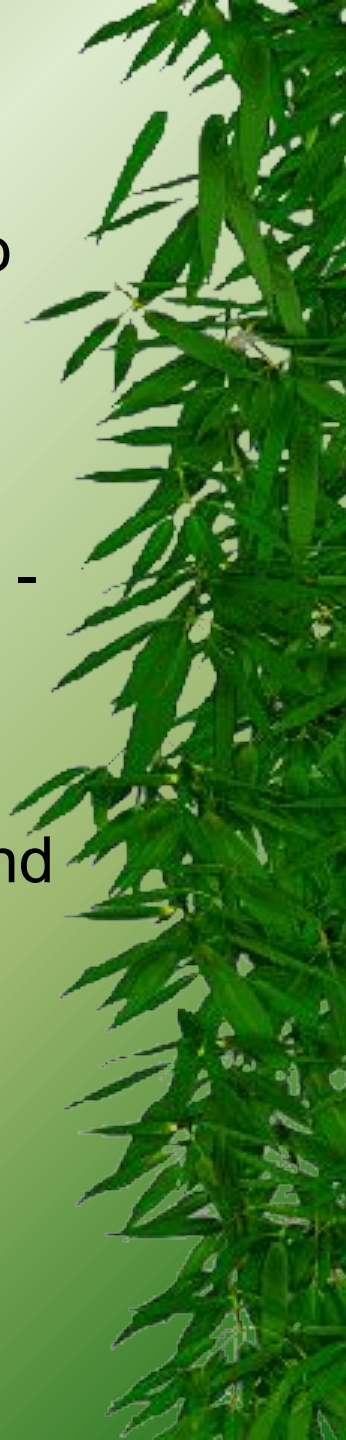
Human infection are rare and normally restricted to
. young children

Light infections of *D. caninum* often are -
. asymptomatic

Infection, however, can still cause abdominal pain, -
. diarrhea, and anal itch in some individuals

Diagnosis

Examination of stool for characteristic segments and
. eggs capsule (less common)



• Microscopy

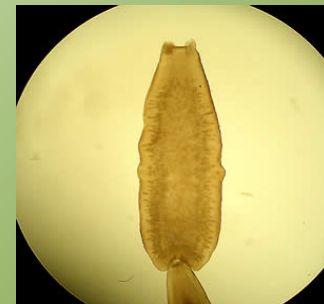
● Eggs

Dipylidium caninum eggs are round to oval and contain an oncosphere that has 6 hooklets. And present as egg capsule containing 5 to 30 or more eggs .



segments

Dipylidium caninum segments have two genital pores, one in the middle of each lateral margin. .They are pumpkin seed-shaped



Scolex

The scolex of *Dipylidium caninum* is conical-shaped and has four suckers. There is rostellum armed with several .rings of small hooks

